

LIFTING AND ACCESSORIES GUIDE

for industrial applications

obligations

1

OBLIGATIONS



SAFETY IS EVERYONE'S RESPONSIBILITY

- Follow all applicable local, state or provincial and national standards.



VERIFICATION BEFORE COMMISSIONING NEW EQUIPMENT

- Verification of equipment suitability
- Review of assembly and installation instructions
- Ensuring the correct load ratings of equipment



FOLLOW LIFTING DEVICE SAFE OPERATING PRACTICES

- Operated only by qualified personnel
- The lifting device shall not be over loaded
- Lifting of loads in accordance to procedures
- Check all connections
- Never lift people or loads over people



INTERNAL AUDITS

- Check general construction
- Preventive maintenance
- Adjustments and repairs
- Replacement parts
- All above completed by qualified personnel



INSPECTION CLASSIFICATION

- Initial inspection prior to use
- Frequent inspection – visual examinations monthly, weekly or daily depending on use
- Periodic inspections:
 - Normal service: yearly
 - Heavy service: semiannually
 - Special or infrequent service



LOAD INDICTORS AND LOAD LIMITERS TO CONTROL CAPACITY

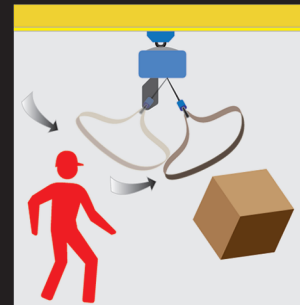
- Enhanced worker safety
- No costly dropped loads
- No structural damage to property

Not all your obligations are listed above. Please consult and abide by all local, state or provincial and national standards.

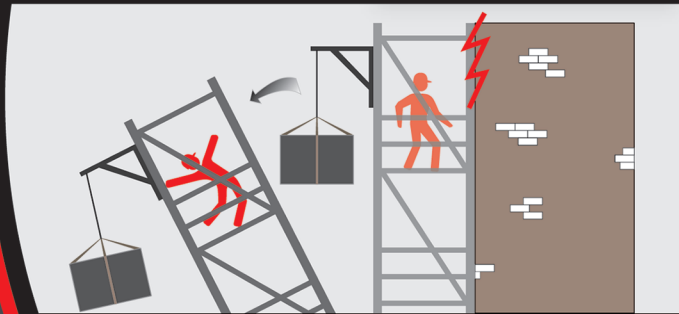
RIS



FAILURE: WORKER INJURY



FAILURE: MATERIAL DAMAGE



FAILURE: WORKER INJURY



FAILURE TO READ/
UNDERSTAND INSTRUCTIONS

Ground handling equipment



Note: The risk assesment shown is a limited example of hazards on a work site. For additional details please contact your Tractel® distributors.

solutions

STEPS

2

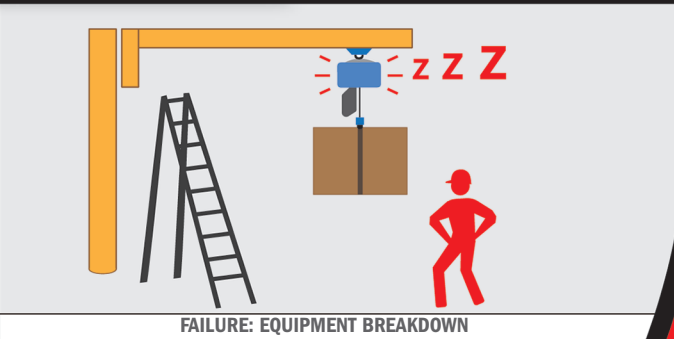
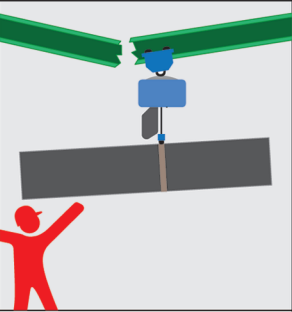
Analysis of the application

Taking into account the needs

Visualization of constraints

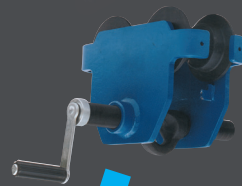
Providing solutions

K S



EQUIPMENT SELECTION

3



Connecting equipment



Hoists



Load indicators



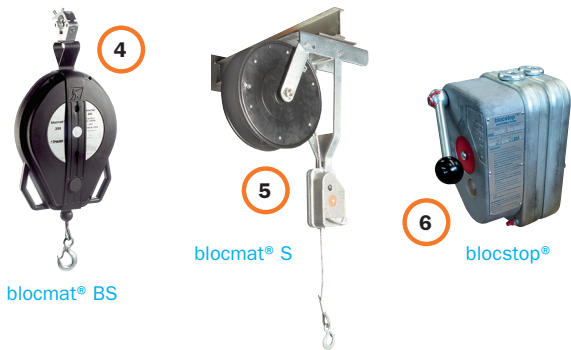
Lifting clamps

CONNECTION SYSTEMS

Trolleys and clamps

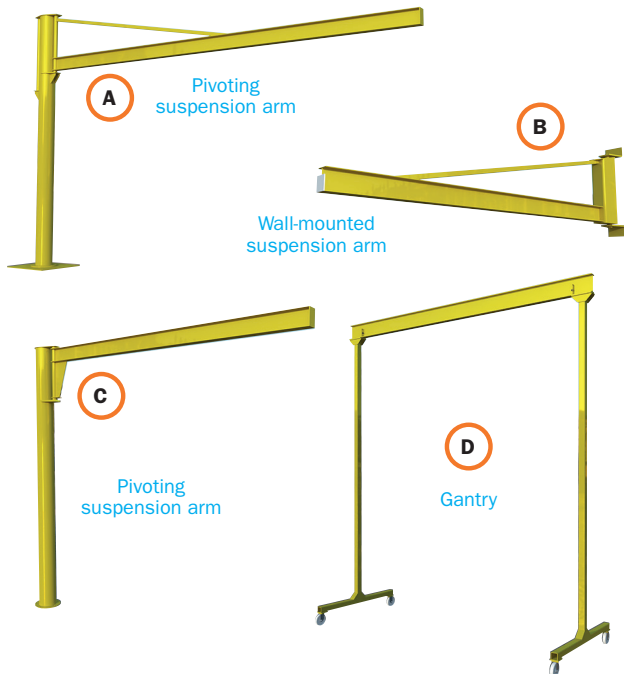


Fall arrest systems



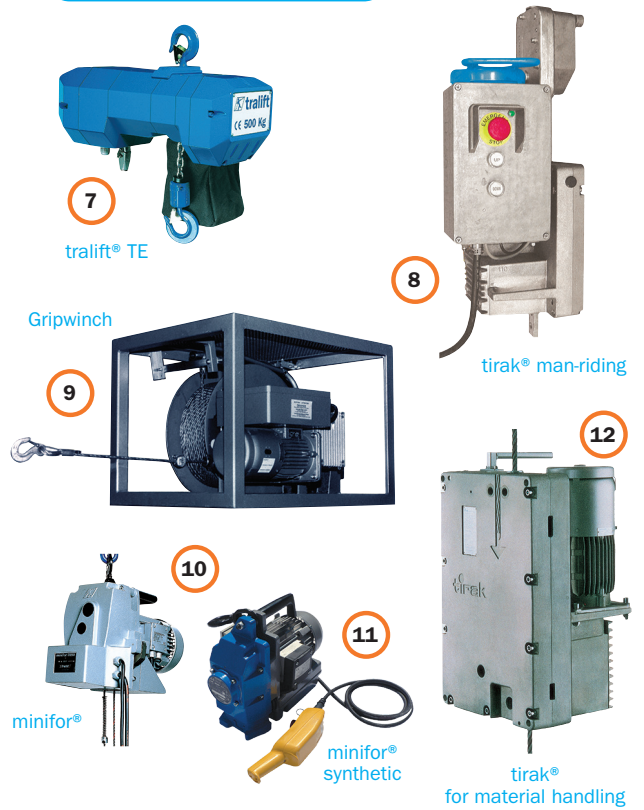
PERMANENT SUSPENSION STRUCTURES

Suspension arms



LIFTING EQUIPMENT

Motorized hoists



Manual hoists



BELOW THE HOOK EQUIPMENT

Electronic load indicators and load limiters



15

dynafor®
LLXh



15

dynafor®
LLX2



dynafor®
LLX1

16



16

dynafor®
MWX



17

dynasafe®



dynafor® AL63

17

dynarope®

Pulleys and hooks



18

Sheave
block



18

Hooks

total™ lifting clamps



19

total™ KS
plate clamp



19

total™ KSA
plate clamp



19

total™ NK
automatic
plate clamp



20

total™ TLH
horizontal
plate clamp



21

total™ NX/NXR
non-marring
clamp



22

total™ F
pipe hook



23

total™ VDL
drum clamp

GROUND HANDLING

Pallet trucks



24

Pioneer

Skates



25

pakrol™

Jacks



26

hydrofor®
hydraulic jack



27

Top
rack jack

interior solutions



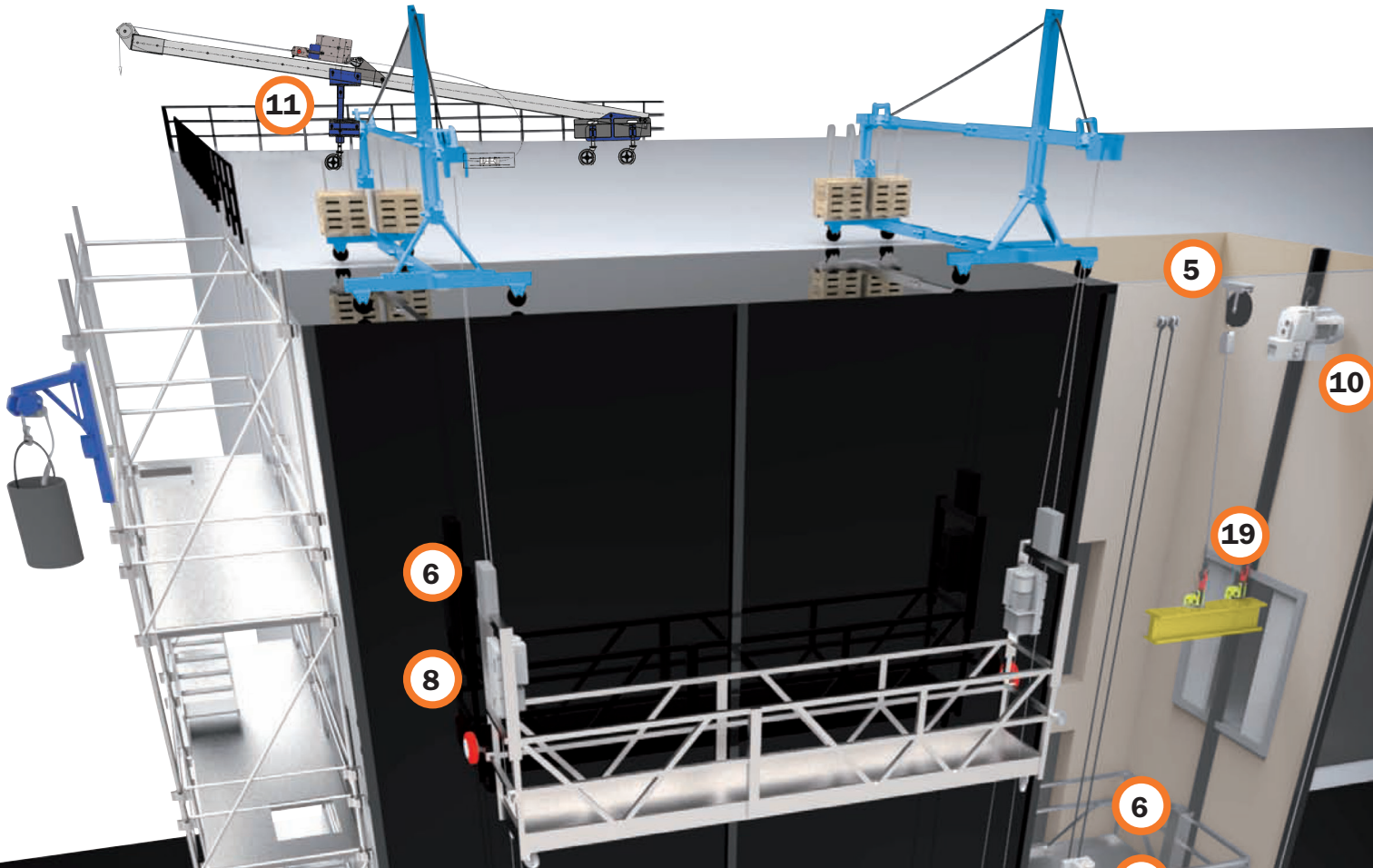
IMPORTANT NOTE

The solutions illustrated are informative only. A site visit to analyze your application is suggested to determine the best solution for your environment. Please contact Tractel® distributors for details.

The reference numbers refer to the Tractel® equipment listed in this document.



exterior solutions



6

8

5

10

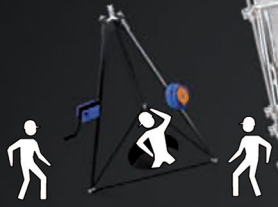
19

6

8

IMPORTANT NOTE
The solutions illustrated are informative only. A site visit to analyze your application is suggested to determine the best solution for your environment. Please contact Tractel® distributors for details.
The reference numbers refer to the Tractel® equipment listed in this document.

Tractel® products are distributed by:



LOS ANGELES
1 800 675-6727
tractel.usa-west@tractel.com

BOSTON
1 800 421-0246
tractel.usa-east@tractel.com

MONTREAL
1 800 561-3229
tractel.canada@tractel.com

www.tractel.com

P4604-v01-0000-02/19 | © 2019 Tractel | All rights reserved. | Printed in Canada.
bloccmate®, bravo®, corso®, dynator®, dynamore®, dynasafe®, gripwinch®, griphoist®, gripwinch®, hydrotor®, minifor®, tirak®, tirfor®, topal®, and trair® are registered trademarks of Tractel®.