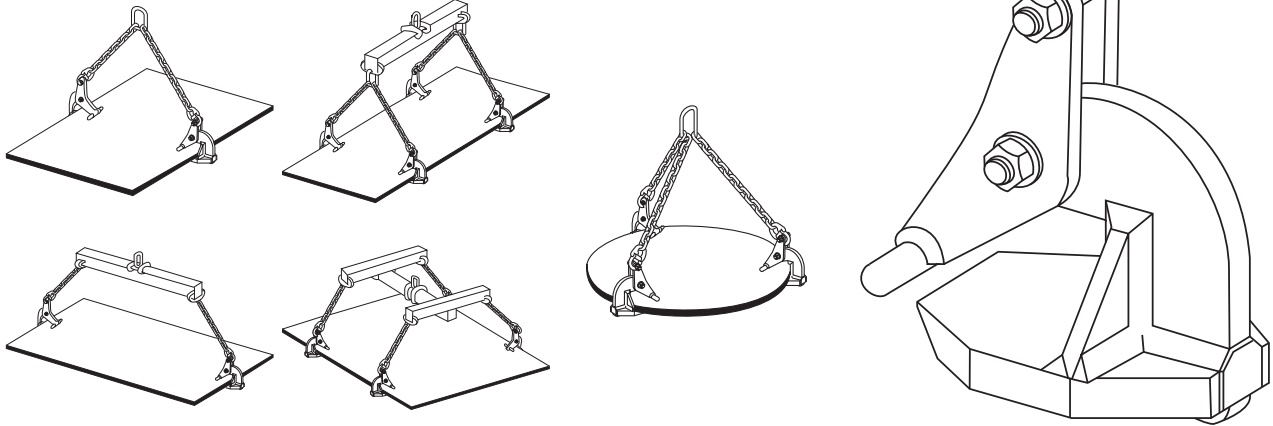


Applications

Lifting of horizontal plates or sheets (individual or bundles), circular plates or fabricated assemblies. Lifts loads up to 5 7/8" (150mm) in thickness, including stacked plates.



Description

The TLH is a horizontal lifting clamp that automatically adjusts to the load thickness by a pivoting actuator that secures every load by the lifting action of the clamp.

Functioning

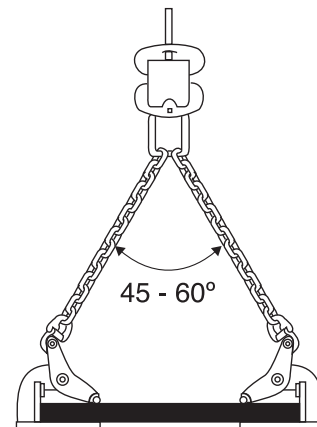
Use in pairs for lifting horizontal plates or sheet metals, individual or in bundles:

- Designed to be used in multiples of 2, 3 or 4 clamps according to load sizing and shape. (optional slings may be required depending on the size of the load).
- Several pairs with 2-legged slings and lifting beam.
- Use three clamps with a 3-legged sling for lifting round sheet metals.

Fit the load fully into the clamps, making sure they are evenly distributed onto the piece to be lifted. Lifting causes the clamps' locking. Clamping is proportional to the load lifted, thus avoiding an excessive marking.

Important instructions

- The plate or piece to be lifted must always be driven home into the throat of the clamp.
- The load must be rigid enough not to bend during handling operations.
- Adhere to the recommended sling angles. If the sling angle exceeds 60°, use a clamp with a higher WLL according to the tension increase in the sling's leg.
- Line up the slings in the same plane as the clamps. Do not side load.
- Working temperature: -20° to +100°C. (-4 to 212F)
- The use of only 2 clamps requires careful examination of balance and stability to avoid tipping the load.

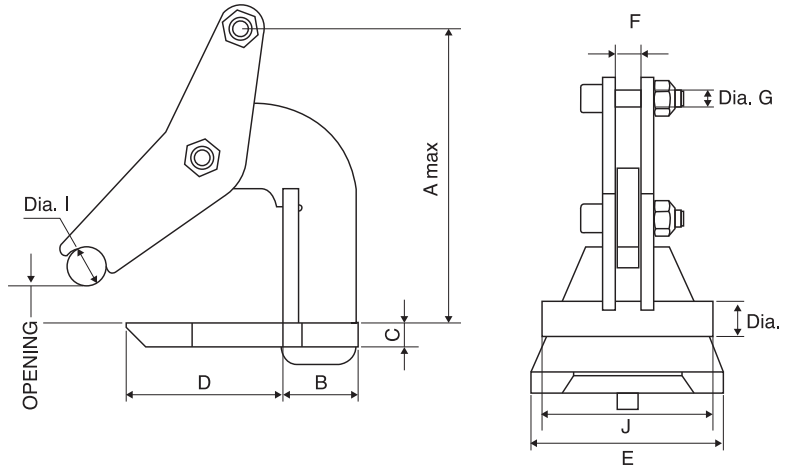


General characteristics

- Hot epoxy coating.
- Safety factor: 3 in accordance with ANSI B30.20.
- Product delivered with instructions for use.

Dimensional characteristics

Ref.	Item Number	WLL lbs. (t) (per pair) kg.	Opening		A	B	C	D	E	F	Dia. G	Dia. I	J	Sling angle		Min chain Dia.	Weight (per pair)
			min	max										min	max		
			In. / mm		In. / mm	In. / mm	In. / mm	In. / mm	In. / mm	In. / mm	In. / mm	In. / mm	In. / mm	min	max	In. / mm	lb. / kg.
TLH1 0-60	51038	2,200 (1)	2 3/8	6 1/8	1 9/16	1/2	3 1/8	3 9/16	1/2	6/16	13/16	3 1/8	45°	60°	1/4	11	
		1,000	0	60	155	40	12	80	90	12	10	20	80	45°	60°	6	5
TLH1 0-120	51048	2,200 (1)	4 3/4	10 1/16	1 15/16	1/2	4 3/4	5 1/2	1/2	1/2	13/16	4 3/4	45°	60°	1/4	22	
		1,000	0	120	255	50	12	120	140	12	12	20	120	45°	60°	6	10
TLH2 0-60	51058	4,400(2)	2 3/8	6 1/2	2 1/16	13/16	3 15/16	4 11/16	9/16	1/2	13/16	3 15/16	45°	60°	5/16	22	
		2,000	0	60	165	53	20	100	119	14	12	20	100	45°	60°	8	10
TLH2 0-120	51068	4,400(2)	4 3/4	10 1/4	2 3/8	9/16	4 3/4	7 1/16	9/16	1/2	13/16	5 7/8	45°	60°	5/16	33	
		2,000	0	120	260	60	15	120	179	14	12	20	150	45°	60°	8	15
TLH3 0-60	51078	6,600 (3)	2 3/8	7 3/16	2 1/3	13/16	3 15/16	4 15/16	5/8	1/2	13/16	3 15/16	45°	60°	2/5	25.5	
		3,000	0	60	182	60	20	100	125	16	12	20	100	45°	60°	10	11.6
TLH3 0-150	51088	6,600 (3)	5 7/8	12 3/4	2 3/4	13/16	5 7/8	7 1/16	11/16	5/8	1 3/16	5 7/8	45°	60°	2/5	58.5	
		3,000	0	150	324	70	20	150	180	18	16	30	150	45°	60°	10	26.6
TLH4 0-60	51098	8,800 (4)	2 3/8	7 9/16	2 11/16	1	4 5/16	4 15/16	7/8	5/8	13/16	3 15/16	45°	60°	2/5	35.2	
		4,000	0	60	192	69	25	110	125	22	16	20	100	45°	60°	10	16
TLH4 0-150	51108	8,800 (4)	5 7/8	13 9/16	2 15/16	1	5 7/8	6 1/4	7/8	5/8	1 3/16	5 1/8	45°	60°	2/5	73.5	
		4,000	0	150	345	74	25	150	159	22	16	30	130	45°	60°	10	33.4
TLH5 0-60	51118	11,000 (5)	2 3/8	7 12/16	2 15/16	1	4 12/16	5 14/16	7/8	5/8	13/16	5 1/8	45°	60°	1/2	44.0	
		5,000	0	60	197	75	25	120	150	22	16	20	130	45°	60°	13	20
TLH5 0-150	51128	11,000 (5)	5 7/8	14 1/16	3 1/8	1	5 15/16	7 7/8	7/8	13/16	1 3/16	6 5/16	45°	60°	1/2	93.7	
		5,000	0	150	357	80	25	151	200	22	20	30	160	45°	60°	13	42.6
TLH10 0-60	51138	22,000 (10)	2 3/8	8 1/16	3 1/8	1 3/16	4 11/16	6 11/16	1 3/8	15/16	1 3/16	4 3/4	45°	60°	5/8	70	
		10,000	0	60	205	80	30	119	170	35	24	30	120	45°	60°	16	32
TLH10 0-150	51148	22,000 (10)	5 7/8	14 1/2	3 15/16	1 3/16	6 5/16	9 7/16	1 3/8	15/16	1 3/16	7 1/16	45°	60°	5/8	136	
		10,000	0	150	368	100	30	160	240	35	24	30	180	45°	60°	16	62



* provide a 2-legged chain sling grade 80 or better per pair of clamps, assembled onto a coupling at the end of each leg.

Practical information for sling definition

Plates width (mm)	750 to 1000	1150 to 1500	1500 to 2000	1900 to 2500	2300 to 3000	2670 to 3500	3050 to 4000
Length of each chain leg (mm)	1000	1500	2000	2500	3000	3500	4000

Options on request

- Protection (polyurethane, PVC or neoprene) on the clamps' upright, bearing plate and lever.

